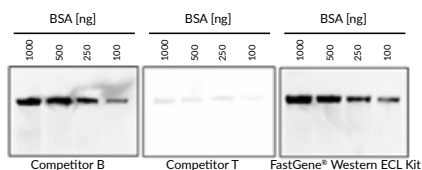


# FastGene® Western ECL Kit



Comparison between the FastGene® Western ECL Kit and 2 competitor products. All kits were used under the same experimental workflow. 1000 - 100 ng BSA were separated in a 4-20% SDS-PAGE (FastGene® Precast Gel). The exposure time was set to 10 sec.

## Chemiluminescent western blot detection

The FastGene® Western ECL Kit is a luminol based enhanced chemiluminescent substrate and sensitive with conducting immunoblots with horseradish peroxidase (HRP) conjugated secondary antibodies. Due to the excellent substrate sensitivity and long signal duration, the FastGene® Western ECL Kit enables the detection of antigens with a very low concentration. Furthermore, its long chemiluminescent signal duration makes both digital and film-based imaging possible without any loss of signal.

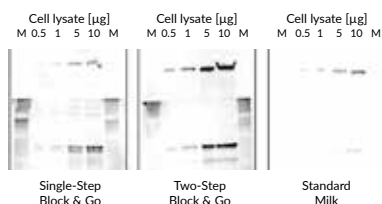
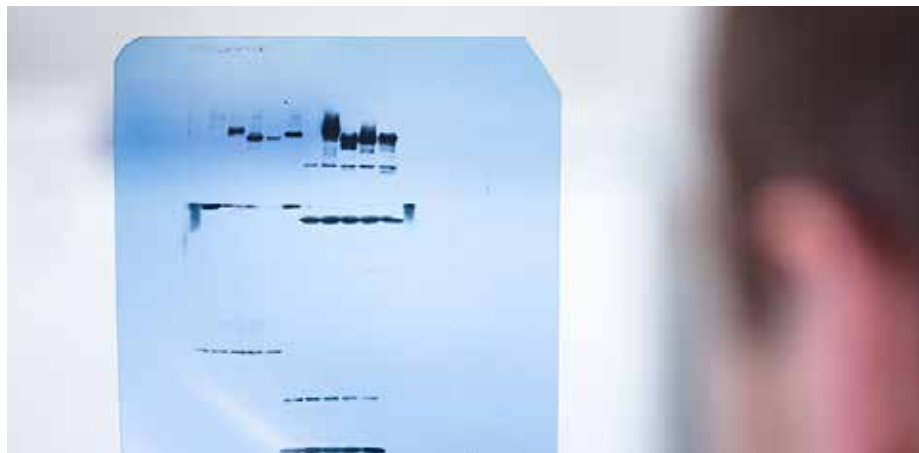


Workflow using the FastGene® Western ECL Kit: Mix the luminol solution and peroxide solution in a 1:1 ratio, and thoroughly agitate the chemiluminescent substrate solution for preparing the 0.1 ml of solution per cm<sup>2</sup> of membrane. Place the membrane with the protein side up and remove the membrane from the chemiluminescent substrate solution. Take an image of the membrane with a chemiluminescence detector.

## Ordering information

Cat. No.	Product	Content
FG-CH01	FastGene® Western ECL Kit	50 ml Solution A, 50 ml Solution B

# FastGene® Block & Go



Western blots with 2 min exposure time comparing two FastGene® Block & Go protocols and the conventional standard method using dried milk. FastGene® Block & Go provides a sensitive method for detection of specific protein expression using as low as 0.5  $\mu$ g whole-cell lysate.

## Ordering information

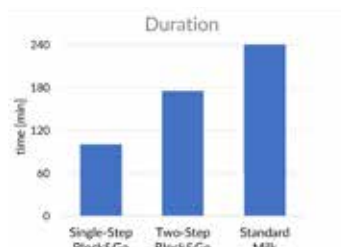
Cat. No.	Product	Content
FG-CH05	FastGene® Block & Go	500 ml solution

## Boost your western blot

The FastGene® Block & Go is a protein-free blocking solution for Western blot analysis, additionally enhancing band intensity when developed with HRP (horseradish peroxidase) or AP (alkaline phosphatase) substrates. It provides a sensitive method to detect specific protein bands in as low as 0.5  $\mu$ g of whole-cell protein lysate.

## Save time and sample

With FastGene® Block & Go, western blot development is performed in a much quicker fashion. The solution can be used in a single-step or two-step protocol. The single-step protocol combines membrane blocking, primary antibody and secondary antibody incubation all in one step, saving more than half the time compared to conventional western blot development protocols.



The use of FastGene® Block & Go can save up to 2:20 h (single-step protocol) and a minimum of 1 h (two-step protocol) compared to the standard blocking procedure with dried milk.