

# CATALOGUE LAB-SAFE CAPS

The essential safety caps with a touch  
of innovation



20  
25

**filterService**  
SINCE 1969

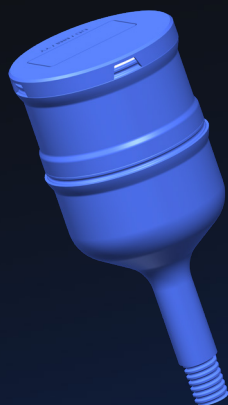
**UltrA**



**D**ear Chromatographers,  
We are pleased to offer you a range of safety caps with the quality excellence you deserve. You'll find a few innovations and the essentials for your needs. In addition to this range, you can ask us for other configurations on request and at no extra cost, as long as we use standard screw threads. We are committed to keeping our prices as attractive as possible, with fast delivery times. Please do not hesitate to contact us for a quotation and further information. We would like to thank you again for the trust you place in us every day.  
Yours sincerely,  
the ..... team

*Georg Von  
Schwartzenberg*

# The essentials of **safety** caps



06

An innovative range  
of exhaust filters

09

A range of safety caps  
for eluent HPLC



10

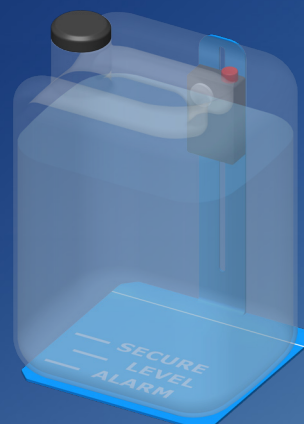
A complete range of safety  
waste HPLC solvents



---

**12**

Overfill detector  
for canister



---

**20**

Universal nuts,  
adapters, barbed fittings,  
miscellaneous

---

**26**

Canisters and retentions  
trays, large-volume  
funnels

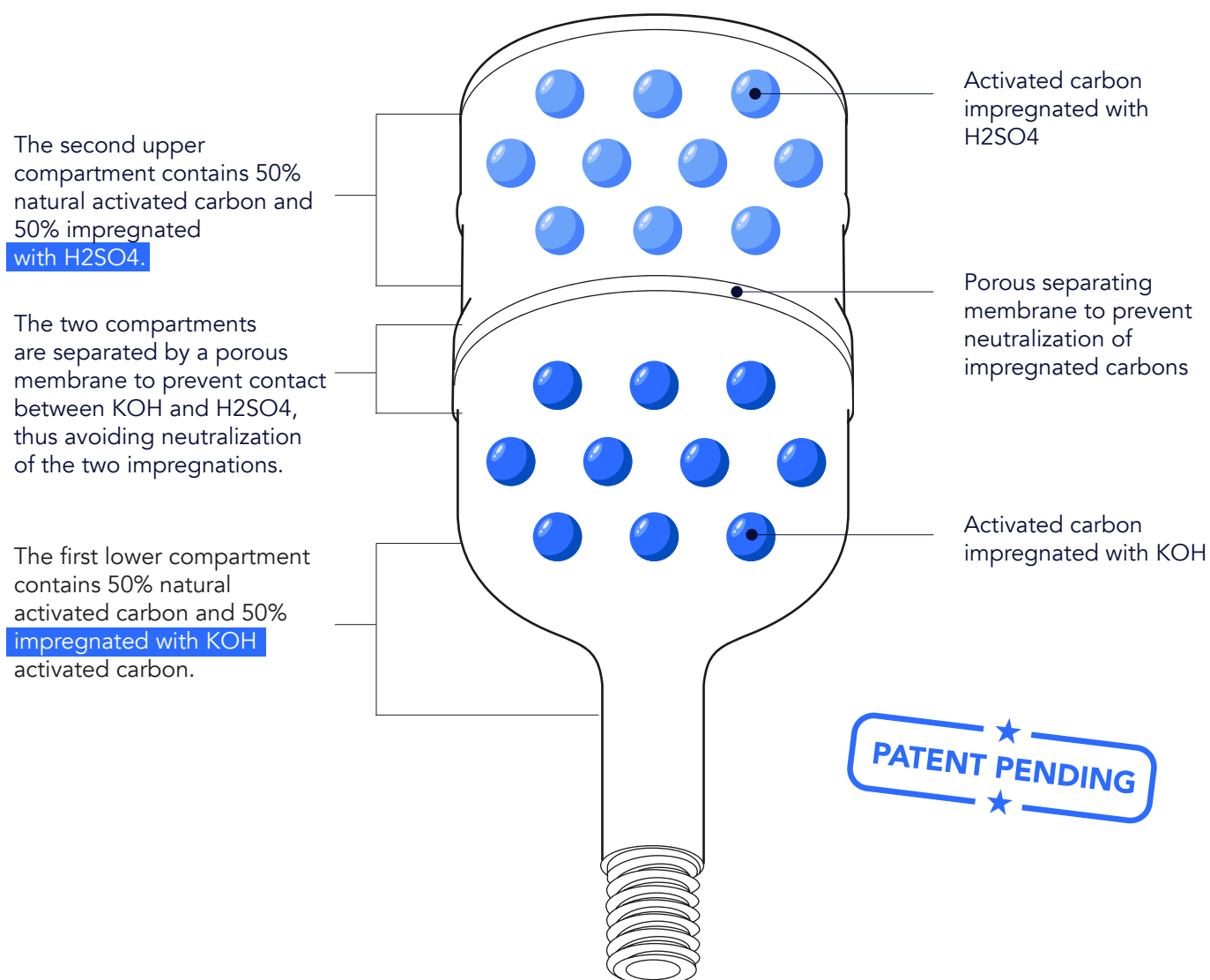




An innovative range with

# Large spectrum adsorption zero-emission exhaust charcoal filters

The new exhaust filters with large spectrum adsorption  
Zero-emissions feature two compartments.



The addition of activated carbon impregnated with  $\text{KOH}$  and  $\text{H}_2\text{SO}_4$  eliminates inorganic acids and bases, which is not the case with conventional cartridges. Allows total neutralization of fumes.



All exhaust filters large spectrum plus are equipped with an anti-splash cover, a timer and a writing area to indicate the cartridge replacement date.



Anti-splash cover with timer.  
On request, add the letter T  
in the «References» section.

## How to order



**Description :** Exhaust charcoal filter with large spectrum adsorption ZE.



**Service life:** 1 year. Compatible with all existing systems except Vaplock.



### Part number:

Per 1 unit:

**FS-EHC-ZE**

Per 10 units:

**FS-C10-ZE**

For Vaplock system:

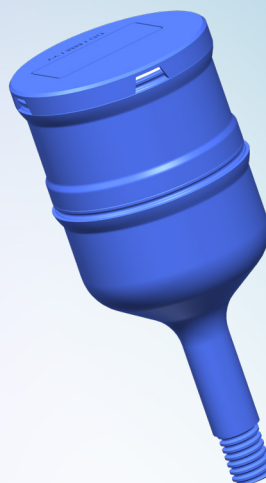
**FS-EHC-ZE + VAP**

# Classic exhaust charcoal filters high adsorption capacity

Classic exhaust charcoal filter with high adsorption capacity, one or two compartments.



**One compartment**  
For 6 months use.



**Two compartments**  
For 1 year use.

## How to order



**Description:** classic exhaust charcoal filter.



**Service life:** 6 months



**Part number:**

Par 1 unité :  
**FS-EXC-M**

Par 10 unités :  
**FS-EXC10-M**



**Service life:** 1 year



**Part number:**

Par 1 unité :  
**FS-EXC-L**

Par 10 unités :  
**FSEX10-L**

### Vaplock

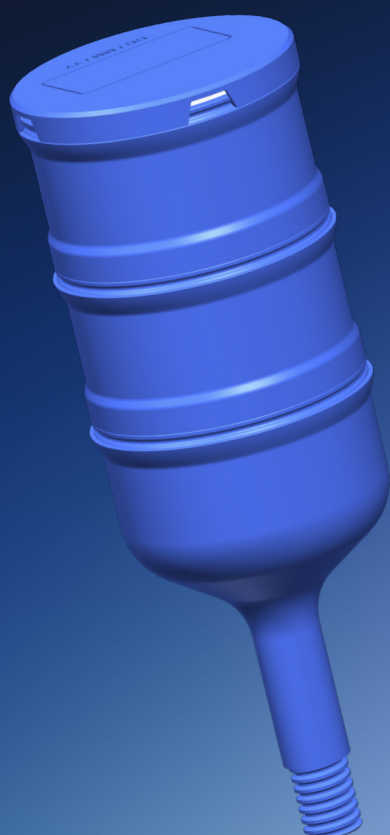
Standard threads compatible with all brands of caps except the **VAPLOCK** brand.

Add the letters VAP at the end of the part number e.g

**FS-EXH-M-VAP**

# Exhaust charcoal filters for very acidic or very basic eluents (other custom requests)

Special exhaust filters for strong acids or bases.



The three compartments contain separately:

One compartment filled with unimpregnated activated carbon.

And two compartments filled with activated carbon impregnated with KOH or activated carbon impregnated with H<sub>2</sub>SO<sub>4</sub>.

## How to order



**Description:** Exhaust filter impregnated activated carbon with KOH for strong acids.



**Service life:** 1 year



**Part number:**

FS-EXC-KOH



**Description :** Exhaust filter impregnated activated carbon with H<sub>2</sub>SO<sub>4</sub> for strong bases.



**Service life:** 1 year



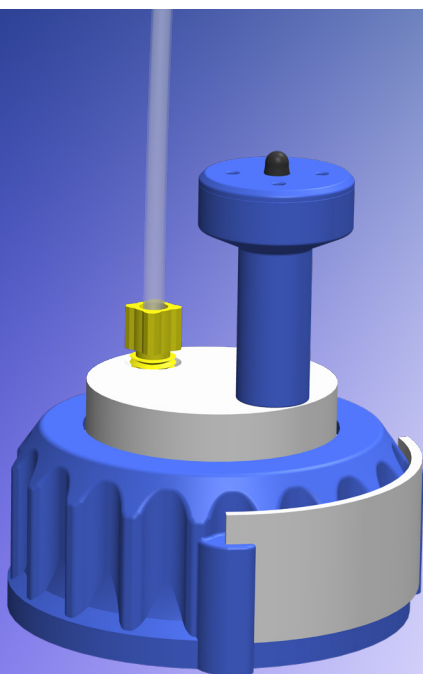
**Part number:**

FS-EXC-H<sub>2</sub>SO<sub>4</sub>

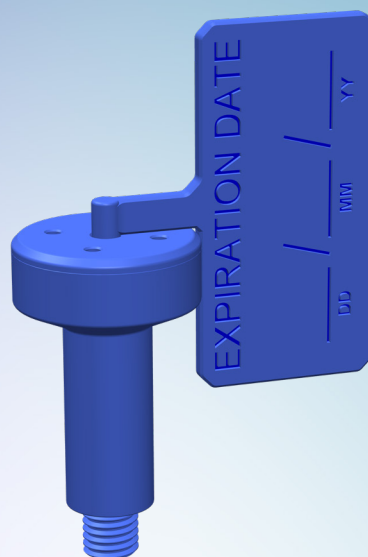


# Lab-Safe caps for analytical systems

- Our Lab-Safe caps are fitted with a ventilation air valve based on duckbill technology. It has the advantage of being made of FDM.
- Our check valves are resistant to the full spectrum of solvents used in HPLC. This duckbill technology also resistant to strong acids and bases. Their sturdiness guarantees a year's optimal service life.
- They are equipped with a writing area allowing the replacement date to be noted. On request, they can be fitted with a time indicator (known as a timer); to do so, add the letter T in the 'References' section.



**Removable label** to indicate the eluent in the bottle.



**Area** to enter the ventilation air valve replacement date.



**Website :** [www.ultra-filter.be](http://www.ultra-filter.be)

**Phone :** +32 (0)9 324 88 63

**Mail :** [info@ultra-filter.be](mailto:info@ultra-filter.be)

**Ultra**



Lab-Safe caps

# Lab-Safe caps pour col GL45



Ref: FS-SLC451



Ref: FS-SLC452



Ref: FS-SLC453



Ref: FS-SLC454



Ref: FS-SLC455

\*Our check valves are designed to withstand strong acids and bases.



Remember to change the ventilation air valve every year.

## How to order



**Description:** Ventilation air valve\* for analytical HPLC system



**Part number:**

Per 10 units:  
**FS-CHECKA10**

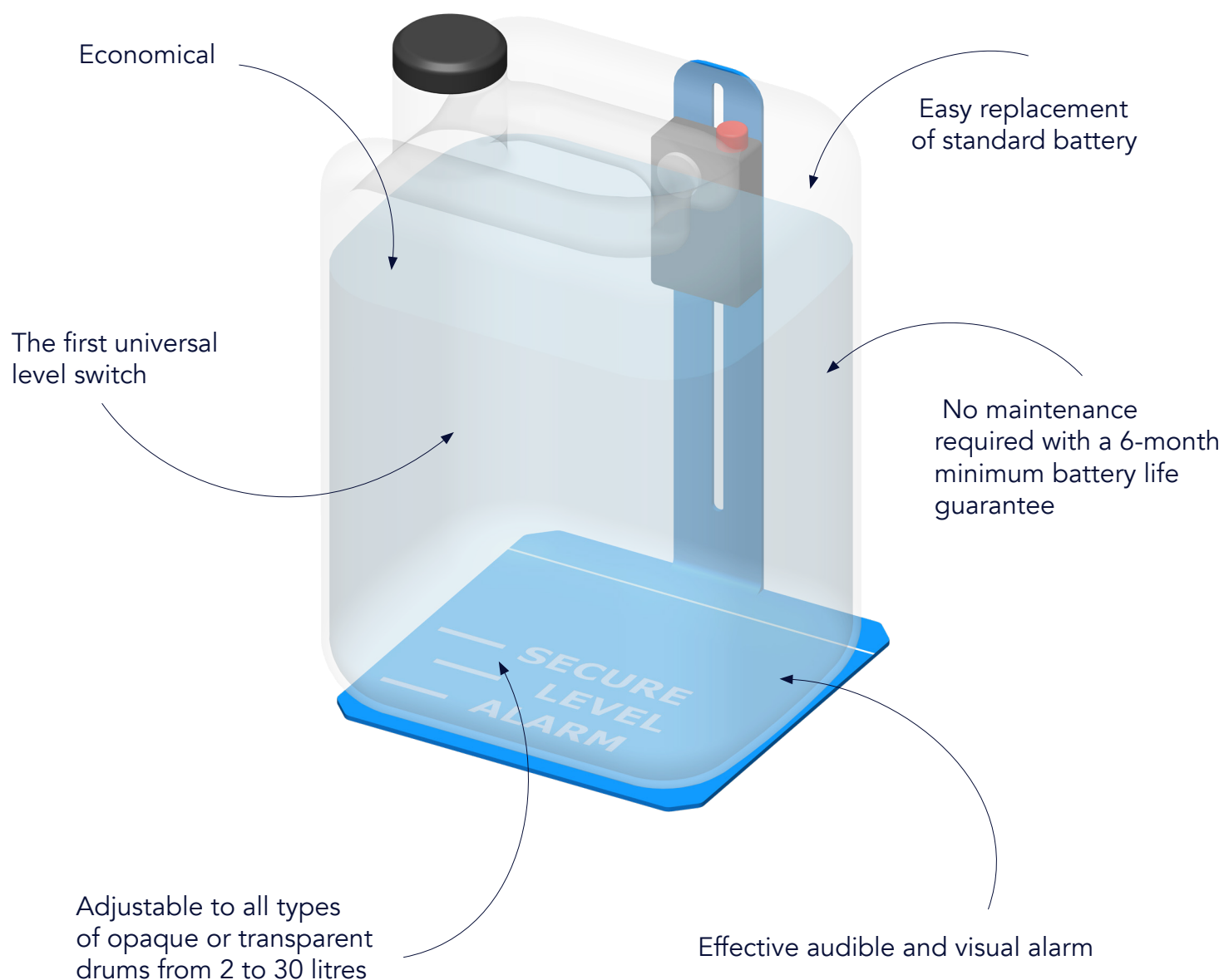
Per 50 units:  
**FS-CHECKA50**



Overfill level detector

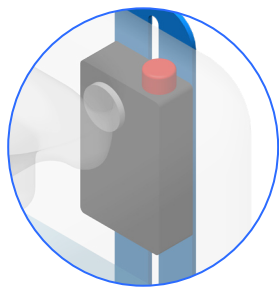


# Overfill level detector for canisters

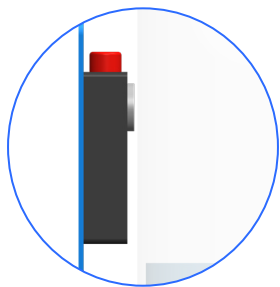


Not requiring any installation settings, the level switch is placed on the outside of the can - without contact

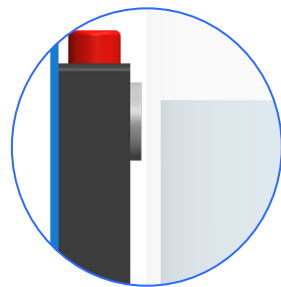
# How it works



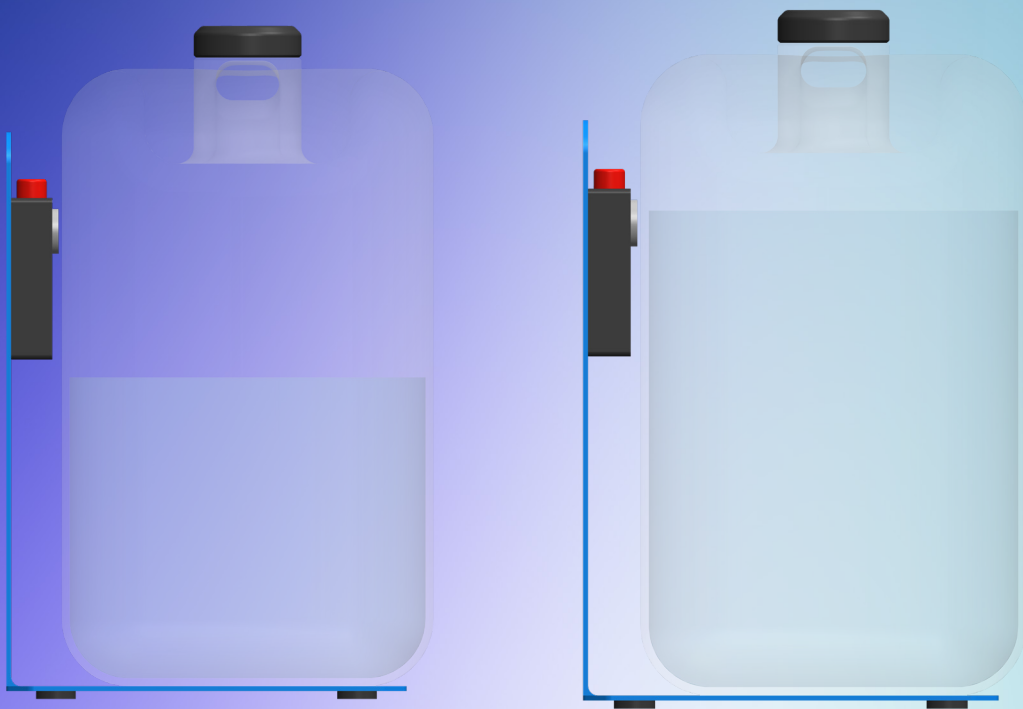
**Step 1**  
The detector is mounted on a sliding bracket.



**Step 2**  
Simply position the detector at the height you feel is necessary to prevent the can from overflowing.



**Step 3**  
There's no need to glue the detector to the side of the can.



## How to order



**Description:** Universal overfill detector for can



**Part number:**

**FS-DETECT-LEVEL01**

# Lab-safe waste caps for used solvents

**Lab-safe WASTE caps are fitted as standard with:**

- Grooved fittings for 6 to 9 mm tubes.
- 1/8" Tube nuts (these standard 1/8" nuts can be replaced by 1/16" nuts on request, when ordering).
- Equipped as standard with hose barb fittings for tubes from 6.4 to 8.8 mm.
- We offer the most commonly used models as standard.
- Finds fittings, nuts and obturators on page 22.
- On request, they can be fitted with a time indicator (known as a timer); to do so, add the letter T in the 'References' section.



Other configurations available on request. Send us the configuration you require, specifying the number of tubes to be connected and their outside diameters. Non-catalog requests will be processed promptly.

# Flexible range of Lab-Safe waste caps

Other configurations are available on request  
at no extra cost. Find fittings, nuts and stoppers  
on page 22.

For GL45



Ref:

FS-45W1



Ref:

FS-45W2



Ref:

FS-45W2B2



Ref:

FS-45W3



Ref:

FS-45W2B1



Ref:

FS-45WB1

# Flexible range of Lab-Safe waste caps

**Other configurations available on request.** Send us the configuration you require, specifying the number of tubes to be connected and their outside diameters. Find fittings, nuts and obturators on page 22.

For DIN 51/S55



Ref:

FS-55W1B1



Ref:

FS-55W3B3



Ref:

FS-55W2B1



Ref:

FS-55W3



Ref:

FS-55W1B2



Ref:

FS-55W1B3

# Flexible range of Lab-Safe waste caps

**Other configurations available on request.** Send us the configuration you require, specifying the number of tubes to be connected and their outside diameters. Find fittings, nuts and obturators on page 22.

For DIN 60/S61



Ref: FS-60WB1



Ref: FS-60W2B3



Ref: FS-60W3B3



Ref: FS-60W4B2



Ref: FS-60W4B1

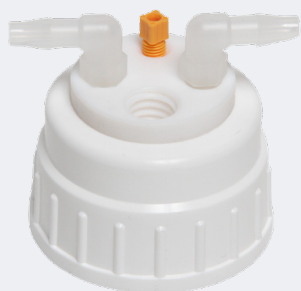
## Useful advice

Refer to page 19,  
location of a barbed  
fitting with an  
obturator.

# Flexible range of Safe-lab waste caps

**Other configurations available on request.** Send us the configuration you require, specifying the number of tubes to be connected and their outside diameters. Find fittings, nuts and obturators on page 22.

## For Nalgene B53



Ref:

FS-53W1B2



Ref:

FS-53W2B1



Ref:

FS-53W1B3

## For Nalgene B83



Ref:

FS-83WB3

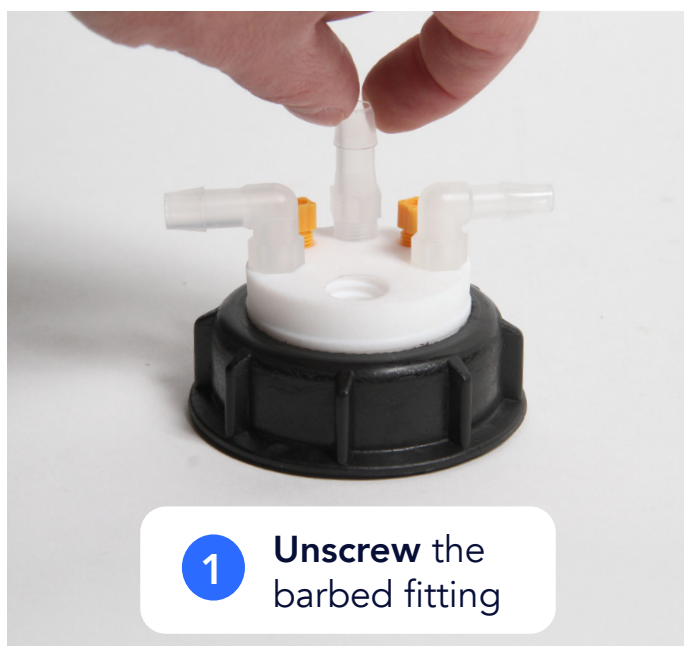


Ref:

FS-83W2



# Location of a barbed fitting with an obturator



# Accessories, Universal nuts, plugs, adapters

## Universal nuts



**Description:**

For tubing  
(OD) 1/8 "



**Ref:**

FS-EU18



**Description:**

For tubing  
(OD) 1/16"



**Ref:**

FS-EU16

## Obturators



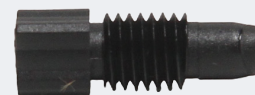
**Description:**

Plugs to replace a  
barbed fitting



**Ref:**

FS-BE



**Description:**

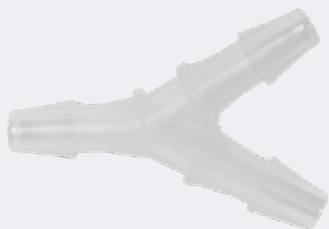
For barbed  
fitting



**Ref:**

FS-RC

## Y connectors



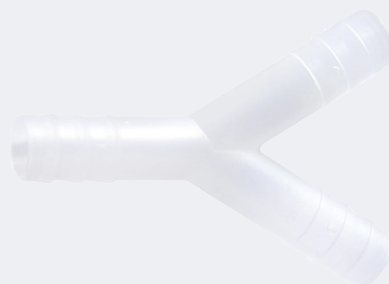
### Description:

For tubing (ID)  
4,6 mm à 7 mm



### Ref:

FS-Y-106



### Description:

For tubing (ID)  
6,5 mm à 9 mm



### Ref:

FS-Y-108

## Adapters PTFE and PP



**Description:** PTFE, for  
thread GL45 (female)  
to thread GL40 (male)



### Ref:

FS-T4540



**Description:** PP\*, for  
thread GL45 (female)  
to thread GL40 (male)



### Ref:

FS-AP4538



**Description:** PP\*, for  
thread S55 (female)  
to thread S60-61 (male)



### Ref:

FS-AP5560



**Description:** PP\*, for  
thread S60/61 (female)  
to thread S55 (male)



### Ref:

FS-AP6055

# Barbed fittings

## Hose barbed fittings



**Description:**  
For tubing (ID)  
de 4 of 6 mm



**Ref:**

FS-C-105



**Description:**  
For tubing (ID)  
de 4.6 of 7 mm



**Ref:**

FS-C-106



**Description:**  
For tubing (ID)  
de 6.4 of 9 mm



**Ref:**

FS-C-108-10



**Description:**  
For tubing (ID)  
de 8 of 10 mm



**Ref:**

FS-C-110

## Straight barbed fittings

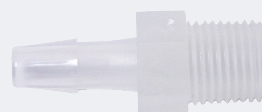


**Description:**  
For tubing (ID)  
from 4 to 6 mm



**Ref:**

**FS-D-105**



**Description:**  
For tubing (ID)  
from 4.6 to 7 mm



**Ref:**

**FS-D-106**



**Description :**  
For tubing (ID)  
from 6.4 to 9 mm



**Ref:**

**FS-D-108**



**Description :**  
For tubing (ID)  
from 8 to 10 mm



**Ref:**

**FS-D-110**



**Website :** [www.ultra-filter.be](http://www.ultra-filter.be)  
**Phone :** +32 (0)9 324 88 63

**Mail :** [info@ultra-filter.be](mailto:info@ultra-filter.be)

**Ultra**

# PTFE and tygon tubing, retention trays

## Tubes en PTFE



**Description:**

Tube PTFE (OD) :  
1/16"



**Ref:**

FS-TUB01



**Description:**

Tube PTFE (OD) :  
1/8"



**Ref:**

FS-TUB02

## Tubes en Tygon



**Description:**

For tubing (OD)  
10 mm



**Ref:**

FS-TY10



**Description:**

For tubing (OD)  
20 mm



**Ref:**

FS-TY20

# Adapters for justrite can and CPC connectors

For justride



Ref:

FS-JUST-C



Ref:

FS-JUST-A

For CPC



Ref:

FS-CPC-C



Ref:

FS-CPC-A



# Canisters GL45, DIN 55-S51 and DIN 61-S60

Canister GL45



**Capacity:** 2.5 liters



**Ref:** FS-CAN45-S

Canister GL45



**Capacity:** 5 liters



**Ref:** FS-CAN45-M

Canister 55-S51



**Capacity:** 5 liters



**Ref:** FS-CAN55-M

Canister 55-S51



**Capacity:** 10 liters



**Ref:** FS-CAN55-L

Canister 61-S60



**Capacity:** 20 liters



**Ref:** FS-CAN60-XL

## Retention trays

**Description:**

Retention tray, small,  
for 5 liters can.

**Ref:**

FS-TRAY-S



**Dimensions:** 60x250x200 mm

**Description:**

Retention tray, medium,  
for 10 liters can.

**Ref:**

FS-TRAY-M



**Dimensions:** 60x350x200 mm

**Description:**

Retention tray, large,  
from 10 to 25 liters can.

**Ref:**

FS-TRAY-L



**Dimensions:** 60x400x300 mm



**Website :** [www.ultra-filter.be](http://www.ultra-filter.be)  
**Phone :** +32 (0)9 324 88 63

**Mail :** [info@ultra-filter.be](mailto:info@ultra-filter.be)  
**Ultra**